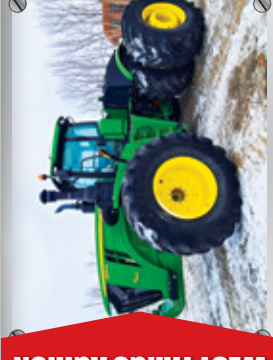
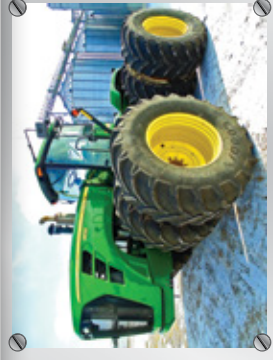


Agtron West Fargo

WEDNESDAY, MARCH 10 | 10AM
2023



WEST FARGO AGIRON



Agtron 2021

March 10
West Fargo

March 18
Mt. Pleasant

March 18
Litchfield

Closes March 10: Steve Meyer Collectible Snowmobile Auction - West Fargo, ND
Closes March 10: Collectible Snowmobile Auction - Litchfield, MN
Closes March 11: Richard Gabrielson Estate Farm Equipment Auction - Darwin, MN
Closes March 16: Kenneth Stadick Farm Retirement Auction - Underwood, ND
Closes March 16: Ken Rustad Farms Retirement Auction - Ossian, IA
Closes March 17: Mason City, IA Multi-Party Farm Equipment Auction - Mason City, IA
Closes March 17: Ken Rustad Farms Retirement Auction - Roseglan, ND
Closes March 18: Darwin & Kris Panning Farm Retirement Auction - Hamburg, MN
Closes March 19: Myrtle Laughlin Estate Farm Equipment Auction - Wapello, IA
Closes March 19: Donavan VanderVoort Farm Retirement Auction - Hector, MN



SteffesGroup.com

VIEW ALL AUCTIONS AT

West Fargo, ND | Grand Forks, ND | Waiford City, ND | Litchfield, MN | Mt. Pleasant, IA | Ames, IA | Mason City, IA | Sioux Falls, SD | Lexington, NE
701.237.9173 | 701.203.8400 | 701.580.2426 | 320.693.9371 | 319.385.2000 | 515.432.6000 | 641.423.1947 | 712.477.2144 | 308.217.4508

SUGARBEET EQUIPMENT

Artsway 690 harvester, 6x22", row finder
(2) WIC defoliators, 12 row, all rubber w/scalpers

HAY & LIVESTOCK EQUIPMENT

New Holland BR7090 baler, hyd. pickup lift, poly guards, twine or net wrap, Bale Command Plus & harness, liquid injection applicator, 31x13.5-15 tires, approx. 13,500 bales, New PTO shaft, always shedded, S/NY9N041341
Jiffy 920 bale processor, LH discharge, rear self-loading, hyd. adj. deflector, drawbar hitch, small 1000 PTO, 12.5L-15 tires, S/N 920050966
(10) NE Pipe & Panel interlocking portable corral panels, 10', New
(120) NE Pipe & Panel continuous fence panels, 20'x5', 6-bar, w/clips & connectors, New
(40) NE Pipe & Panel portable interlocking corral panels, 10'x5', New
Industrias America feeder, New

SEED TENDERS & GRAIN HANDLING EQUIPMENT

Convey-All 410 seed tender, 2-compartment, electric slide control, electric conveyor controls, 180 degree swing, roll tarp, remote control, Honda GX160 motor electric start gas motor
Convey-All 405 seed tender, 2-compartment, manual swing conveyor, 180 degree swing, roll tarp, Honda GX160 electric start gas motor
Handlair 560 grain vac, folding spout, 1000 PTO, rear hitch, asst. flex tubes & cleanup kit
Batco 1590 belt conveyor, 90'x15", hyd. low profile swing hopper, hyd. up/down, 540 PTO, S/N160050

BIN & AERATION EQUIPMENT

Full floor aeration floors, 10' planks: (2) 18' bin; (2) 21' bin; (2) 24' bin; (2) 27' bin, aged inventory
Starters: (30) WEG 3 hp.; (32) WEG 15 hp.; (10) Eaton 25 hp.; (6) Eaton 5 hp.; aged inventory
(11) asst. motors: 1-1/2 hp., 2 hp., & 3 hp.

ROUGH TERRAIN FORKLIFT

Allis Chalmers 630 rough terrain forklift, 2WD, ROPS, 4 cyl. gas, 4 spd. shuttle shift, 3-stage mast, 48" forks, 5,000 lb. cap., 16.9-24 tires, S/N3141

SKID STEER LOADER ATTACHMENTS

Lowe 1650 hyd. auger, 12" & 18", quick tach, for skid steer loader, New
Lowe 750 hyd. auger, 12", quick tach, for skid steer loader, New
(4) Maxam skid steer loader tires, 12-ply, New
(2) Patriot Attachments heavy duty brush mowers, 72" & 80", for skid steer loader, New
(4) Patriot Attachments rock and brush grapples, 66"-84", for skid steer loaders, New
Patriot Attachments root grapple, 70", for skid steer loader, New
(4) Patriot Attachments rock buckets, 66"-84", for skid steer loaders, New
(3) Patriot Attachments sets pallet fork ext., 84", for skid steer loaders, New
(2) Patriot Attachments receiver hitches, for skid steer loaders, New
(4) Patriot Attachments weldable quick attach plates, for skid steer loaders, New
(4) Redline snow buckets, 90"-108", for skid steer loaders, New
(2) Redline rock buckets, 72", & 82" w/5" tine spacing, for skid steer loader, New
Redline brush grapple, 82", double cyl., for skid steer loader, New
Redline rock bucket grapple, 72", for skid steer loader, New
Redline dirt bucket, 78", for skid steer loader, New
Redline tree/post puller, for skid steer loader, New
(4) Redline walk-through pallet fork sets, 48", New, for skid steer loader
(4) Redline solid weld-on quick tach plates, for skid steer loader, New
(4) Redline receiver plate trailer movers, New
Stout XHD84-6 brush grapple, quick tach, for skid steer loader, New
Stout HD72-4 brush grapple, closed-tine, quick tach, for skid steer loader, New

SKID STEER LOADER ATTACHMENTS

Grapple, Model 72-3B, w/bolt-on sides, quick tach, for skid steer loader, New
(4) Industrias America post pullers, New
(5) Industrias America buckets, (2) high cap.
(2) HD walk-through pallet fork sets, 48", 4,500 lb., quick tach, for skid steer loaders, New
(2) HD walk-through pallet fork sets, 48", 5,500 lb., quick tach, for skid steer loaders, New

BLADES

(11) Industrias America snow pushers, including (2) for loaders, New
(3) Industrias America graders, New
(6) Industrias America box blades, 8'-14", New

OTHER EQUIPMENT

Woods Alloway flail shredder, 20', 3 pt., 9.5-15 tires, worn paddles, always shedded, S/N527249
Woods RM306 mower, 72", 3 pt., 540 PTO
(2) Case-IH finger reels, 35", off 2020 flex heads
Lankota header mover, 3 pt., top cylinder link
Drive-on swather transport
Redline pallet fork, 2,500 lb., for compact tractor, used but New fork tines
Worksaver bale carrier, 3 pt., New
Single axle trailer, 20', long pole, no bed
Katolight KLM1-40-540 generator, PTO, 40kw, 1 phase, 120/240v, 15 & 50 amp plugs, approx. 20' cord, 540 PTO, on HD 2-wheel trailer, S/NMRP0176469-0209
Cable winch, planetary drive, air brake, 1" cable, hyd. drive, Intelliguard alert system
SSR Pump high capacity water pump, 12", 1000 PTO, transport, approx. 25' of discharge hose

UTILITY TRACTORS & LOADER

Ferguson utility tractor, wide front, 3 pt., 540 PTO
Oliver 770 wide front, gas, power steering, F11 loader w/grapple
Allis Chalmers B, with belly mower, runs but needs work

LAWN & GARDEN

2011 Bad Boy ZT Pro zero turn lawn tractor, Kohler 27 hp. gas, commercial 60" deck, 449 hrs.
2011 Bad Boy ZT Pro zero turn lawn tractor, Kohler 27 hp. gas, commercial 60" deck, 888 hrs.
2011 Walker MT25i zero turn lawn tractor, 48" deck, bagger, front thatcher, 1,272 hrs., New front tires in 2020, spare blades & parts, S/N135527

ATV & SPRAYERS

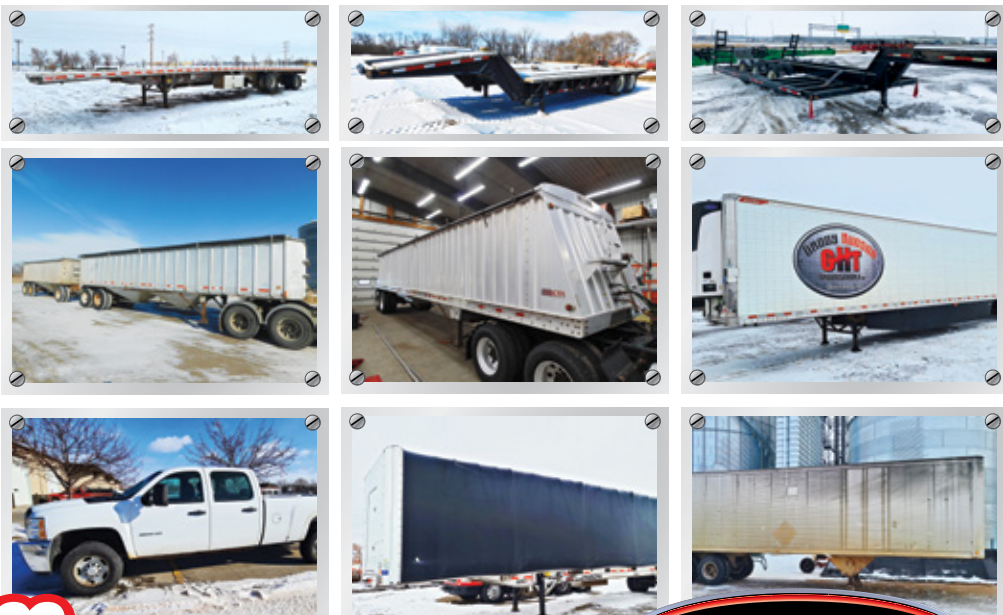
1994 Polaris 300 ATV, 4x4, 300cc, front & rear racks, 7,300 miles, bill of sale only, No title, non-roadable
F/S Mfg ATV sprayer, 8' booms, 15 gal. tank, 12v pump, hand wand
Sprayer Mfg Co pull-type ATV sprayer, 8' booms, 30 gal. tank, 12v pump, hand wand, on single axle trailer

SHOP EQUIPMENT

Craftsman radial arm saw, 10", on stand
Shop items: (2) steel parts bins, 5'x6'x12" each; (2) small hand grinders

TANKS, TIRES & PARTS

(3) 3,000 gal. yellow poly tanks, 3" fittings, 2" valves
Misc. 10:00-20 truck tires w/rims
John Deere soybean crop dividers for 635F head
(72) Yetter SharkTooth row cleaner wheels
(2) poly half round truck fenders, never installed



SteffesGroup.com



Contact auctioneers for owner information, new consignments, or changes at 701.237.9173 or 800.726.8609.

Please join us!

Steffes Group, Inc.
2000 Main Avenue East
West Fargo, ND 58078-2210



PRESORTED
FIRST CLASS
US POSTAGE
PAID
PERMIT #315
FARGO, ND